

# Sonocaddie™ XV2 Quick Start Guide— START HERE!

1. Insert the Disk labeled “Installation Disc” into the CD-Rom drive on your computer.

2. Choose the Driver that is correct for your operating system under **Step 1** (Fig. A).

3. The installShield Wizard will appear (Fig. B). Read all information and follow the prompts to install the USB Cable Driver.

4. Once the installation is completed it will prompt you to FINISH the installation. Click FINISH to complete the installation.

5. Return to the Driver Installation window (Fig. A).

6. Complete **Step 2** by clicking on the Install Sonocaddie Driver button.

7. Once you have clicked on Install Sonocaddie Driver, a new window will open in Internet Explorer (Fig. C). Click on **“Sonocaddie Driver”**.

8. A “File Download” dialog box will open. Select “Save” After clicking on Sonocaddie Driver a File Download box will appear (Fig. D).

9. A Save as box (Fig. E) will appear. Make sure that the “Save in” box says “Desktop”. (If it does not, click on the blue down arrow and choose Desktop.) After you are sure that it saving on the Desktop. Click on “Save”.



Fig. A

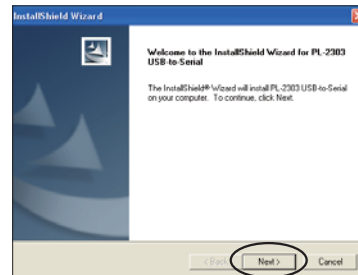


Fig. B

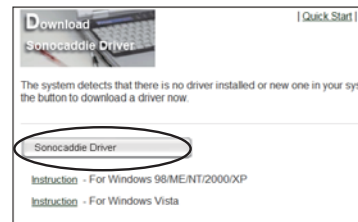


Fig. C

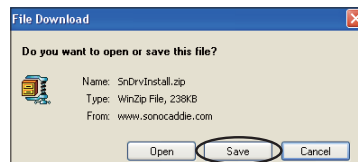


Fig. D

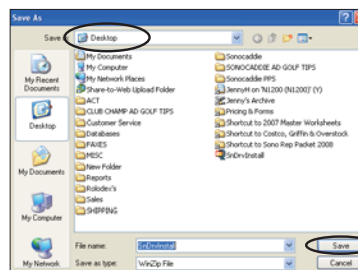


Fig. E

10. Close-out of all programs and boxes that are open on your screen. Go to your desktop and locate the Zip file labeled “SnDrvInstall”. (Fig. F) Double click on SnDrvInstall

11. A WinZip box will open (Fig. G.) Click “I Agree”.

12. Follow the prompts to unzip the file (Fig. H).

13. When prompted to Unzip and Install, Update or Create a new file Choose Unzip or Install (Fig.I). When prompted in next screen click “UNZIP NOW”.

14. After all has been unzipped the folder will open. Double click on the SnDrvInstall Icon (Fig. J) This will run the installation for the Sonocaddie Driver.

15. You will then be brought to the Sonocaddie Installation Wizard. Follow the Onscreen prompts. Once you have gotten to the Installation Complete page you have successfully downloaded the drivers.



Fig. F

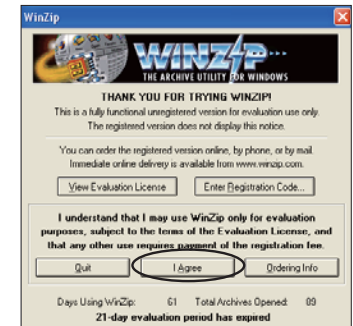


Fig. G



Fig. H

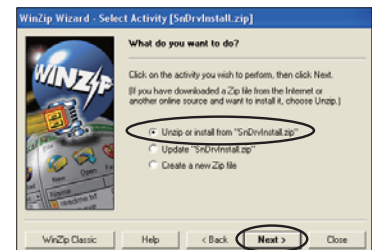


Fig. I



Fig. J

CONGRATULATIONS!

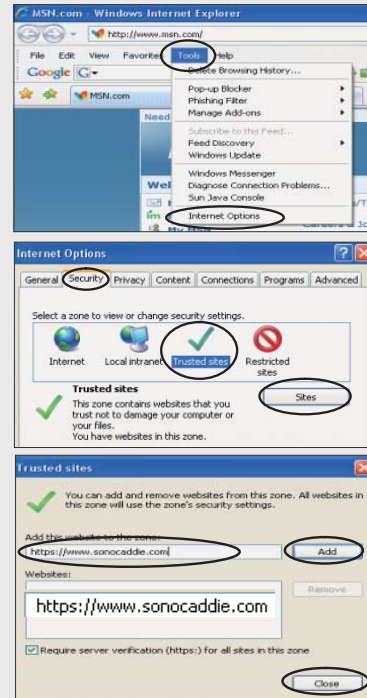
You have now successfully downloaded the drivers that enable you to use your new GPS Device. Please turn the page to make some very important setting changes on your computer.

# Sonocaddie™ XV2 Quick Start Guide— 2nd Page

FIRST - Please make sure that any and all Anti-Virus software is shut off. Once you have downloaded the courses that you want onto your new GPS Unit you can turn them right back on.

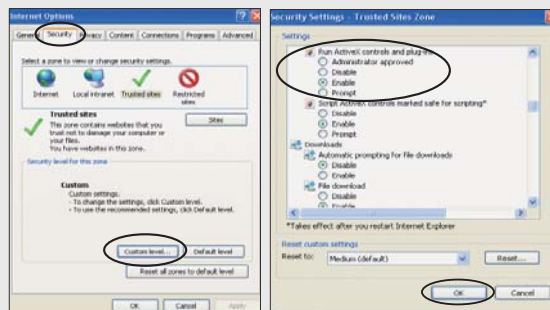
## STEP 1. How to make Sonocaddie a trusted site?

1. Locate the Internet Explorer Icon on your desktop. Double click on it.
2. This will bring you to your homepage on the internet. In the top left hand corner click on the "Tools" bar. Under tools choose "Internet Options".
3. Internet Options tab will come up. Choose "Security" tab.
4. Click on the green check mark that is labeled "Trusted Sites".
5. Once you've clicked the green check mark the screen will change to show you a button labeled "sites". Click on this button.
6. When in the Trusted Sites tab under Add this website to the zone, enter: <https://www.sonocaddie.com>
7. Click the button labeled "Add".
8. Once you have added you will notice that the address has been added under the websites box. When it appears there please click "Close".



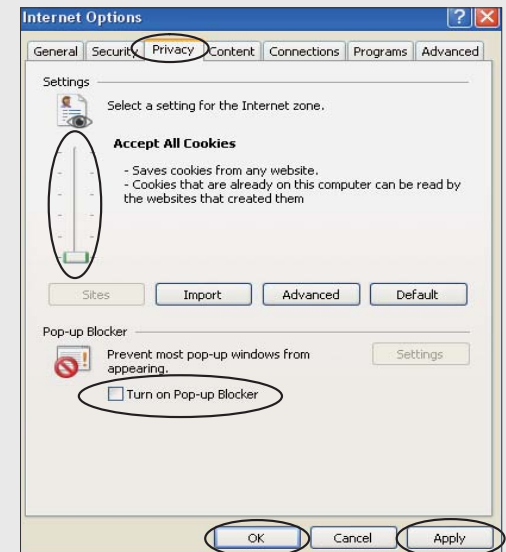
## STEP 2. Why am I always prompted to install the driver?

1. Under the security tab in Internet Options—Go to Security Level and choose "Custom Level"... Click on it.
2. Scroll to the ActiveX Controls and plug-ins section of the list, then, under the Run ActiveX controls and plug-ins, click enable.
3. Click "OK" at the bottom
4. Click "Yes" to confirm that you want to make the change.



## STEP 3. Why am I unsuccessful in creating an account? Or, Why can't I login my account?

1. Under the "Privacy" tab in Internet Options—Go to "Settings". Move the "Scroll Bar" all the way down to the bottom. Next to it the "blurb" will read... Accept All Cookies.
2. Go to the Pop-Up Blocker Section and make sure that the "Turn on Pop-up Blocker" is NOT CHECKED.
3. Click "Apply"
4. Click "OK"



## STEP 4. Why does the page show "Failed to connect to sonocaddie.com!! ?

1. Under the Start Menu locate Control Panel—click on it.
2. When your Control Panel is open locate the Windows Firewall Icon and double click it. (should you not see the windows firewall icon it can also be located under the security center icon—just double click it.)
3. Once in Windows Firewall choose the "Off" option.
4. Click "OK"



Note: After installation and successful download of your course(s) please note that Microsoft recommends the firewall be turned "On".

