



V500 Quick Start Guide V 5.0.04_E

V500 Introduction



1. Power open / off Button
2. Screen Lock Button
3. USB Cable & Charging Port
4. Satellite Signal
5. Right / Left Soft Key (Hole Selection Key)

How to Start V500?

1. Register a V500 Member Account

To use your V500 first time, you must have a V500 member account. Simply register a membership at www.sonocaddie.com/V500/member.html and select "Register." Follow the instructions to complete the registration.

Important!

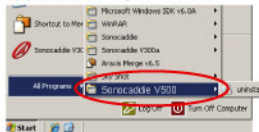
You need the Serial Number (S/N) of your V500 to register your member. It is located on the back of the V500 under the battery.



2. Install V500 Driver

Install the V500 Driver from CD included or V500 website at <http://www.sonocaddie.com/V500/Support.html> if you do not have CD-ROM device.

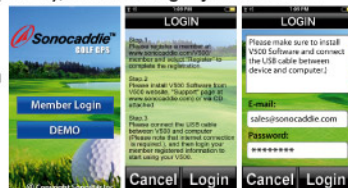
Note: The Driver is for connecting your V500 and computer only. Please check V500 driver from program files after completing the installation.



3. Login your Member Information in V500

After completing the installation, please turn on V500 and connect the USB cable between V500 and computer (Please note that internet connection is required.), and then login your member information to start.

(Note: The login process must be done using the touch screen keyboard in the V500. HINT: A golf tee will work well on the screen keyboard.)



4. Calibrate V500 Touch Screen

The first time you use your Sonocaddie V500, please go to "Settings" in the Main Menu and select "Touch Calibration" to calibrate V500 Touch Screen.

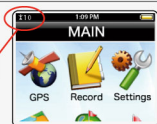
How to Play?

Important!

V500 performs best under a clear sky and with six satellite signals or more.

(You can see the satellite reception on the left top of the main screen.)

Environmental factors (such as rain, dense clouds, fog, solar flares, high voltage electricity, cellular phone towers, etc.) may adversely affect the GPS reception.



1. Course Auto Search



Select "Search" from the "Main" menu and then select a range from 10, 30, 50 miles to get course list.

2. Search Courses from "Preloaded Course"



Select "Preloaded Course" from "Main" menu to get course list.

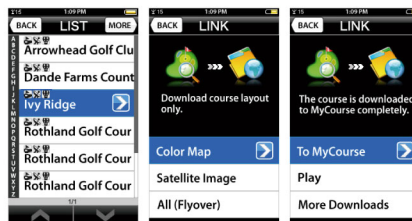
Step 3

Search the "Country, State, and City" to get the course list and select the course you want to download. (NOTE: The course you download will be stored in the "My Course" folder.)

Important!

The "My Course" Folder can hold the following:
Up to 100 courses with color layouts and satellite imagery.

Note: The number of courses downloaded depends on the size of each course file, especially video flyover.



- Color layout
- Satellite Imagery
- Flyover

How to Download New Courses?

Step 1

Connect the USB cable between V500 and computer (Please note that internet connection is required.), and then select "Link" from Main menu to start the linking.



Step 2

Key in your password (your email account will be defaulted when you login in V500 first time) with the screen keyboard and then press "Login" to connect Sonocaddie course data.



Important!

A course package (credit) is required if you would like to download the Satellite Imagery & Flyover. Please refer to www.sonocaddie.com/V500/member.html for more detailed information.

Contact Us

If you have any problems with the operating of V500, please feel free to contact us at sales@sonocaddie.com. We are pleased to answer your handheld golf GPS questions and help you to know Sonocaddie better.